

# Certificate of Analysis

## SLU-PP-332 Tablets

4-hydroxy-N-[(E)-naphthalen-2-ylmethylideneamino]benzamide

**Compound** : SLU-PP-332

**Client** : Nordheim Labs

**Lot number** : 2024-12-19

<https://nordheimlabs.com/>

**Analysis date** : 2025-01-10

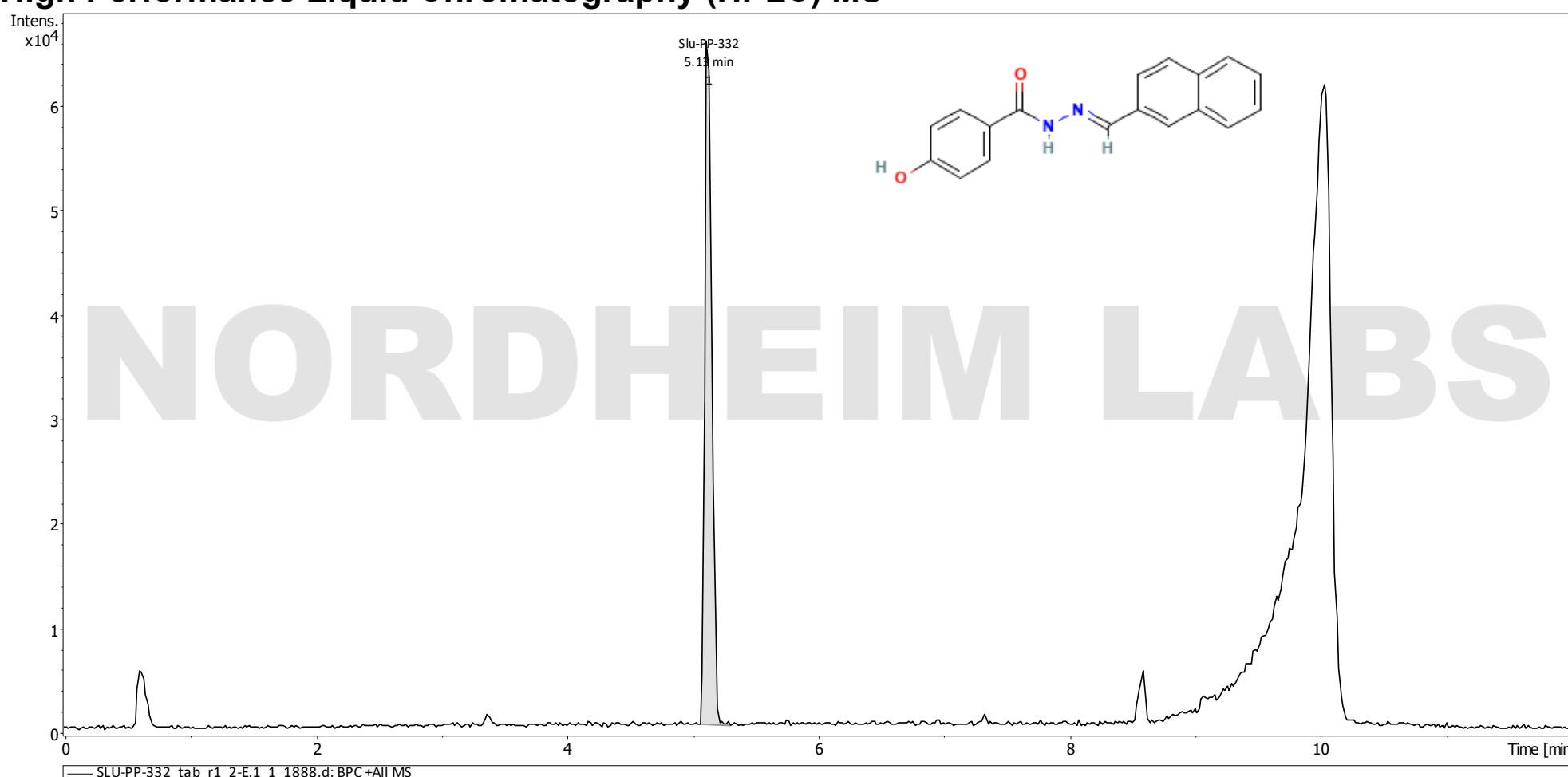
**Quantity** : 341 mcg/tablet

**Method** : HPLC-MS

PubChem CID: 135741221

<https://pubchem.ncbi.nlm.nih.gov/compound/135741221>

### High Performance Liquid Chromatography (HPLC) MS



**SLU-PP-332 detected at 5.13 minutes**

Background peaks due to tablet filler

#### Quantification by HPLC-MS

Replicates	mcg/tablet
SLU-PP-332_tab_r1	304.6
SLU-PP-332_tab_r2	318.2
SLU-PP-332_tab_r3	354
SLU-PP-332_tab_r4	350.7
<b>Average mcg/tablet</b>	<b>341.0</b>

Analysis Performed by  
Ken Pendarvis, ChE  
Analytical Chemist  
MZ Biolabs  
[contact@mzbiolabs.com](mailto:contact@mzbiolabs.com)



2025-01-13



MZ Biolabs  
2102 N Country Club Rd  
Tucson, AZ 85716  
[contact@mzbiolabs.com](mailto:contact@mzbiolabs.com)  
[www.mzbiolabs.com](http://www.mzbiolabs.com)

# SLU-PP-332 Tablets

PubChem CID: 135741221

<https://pubchem.ncbi.nlm.nih.gov/compound/135741221>

## Mass Spectrometry (MS) – Identity Test

### Identity confirmed using HPLC-MS

Molecular weight calculated using monoisotopic m/z values from mass spectrum

Expected monoisotopic mass : 290.11 Da

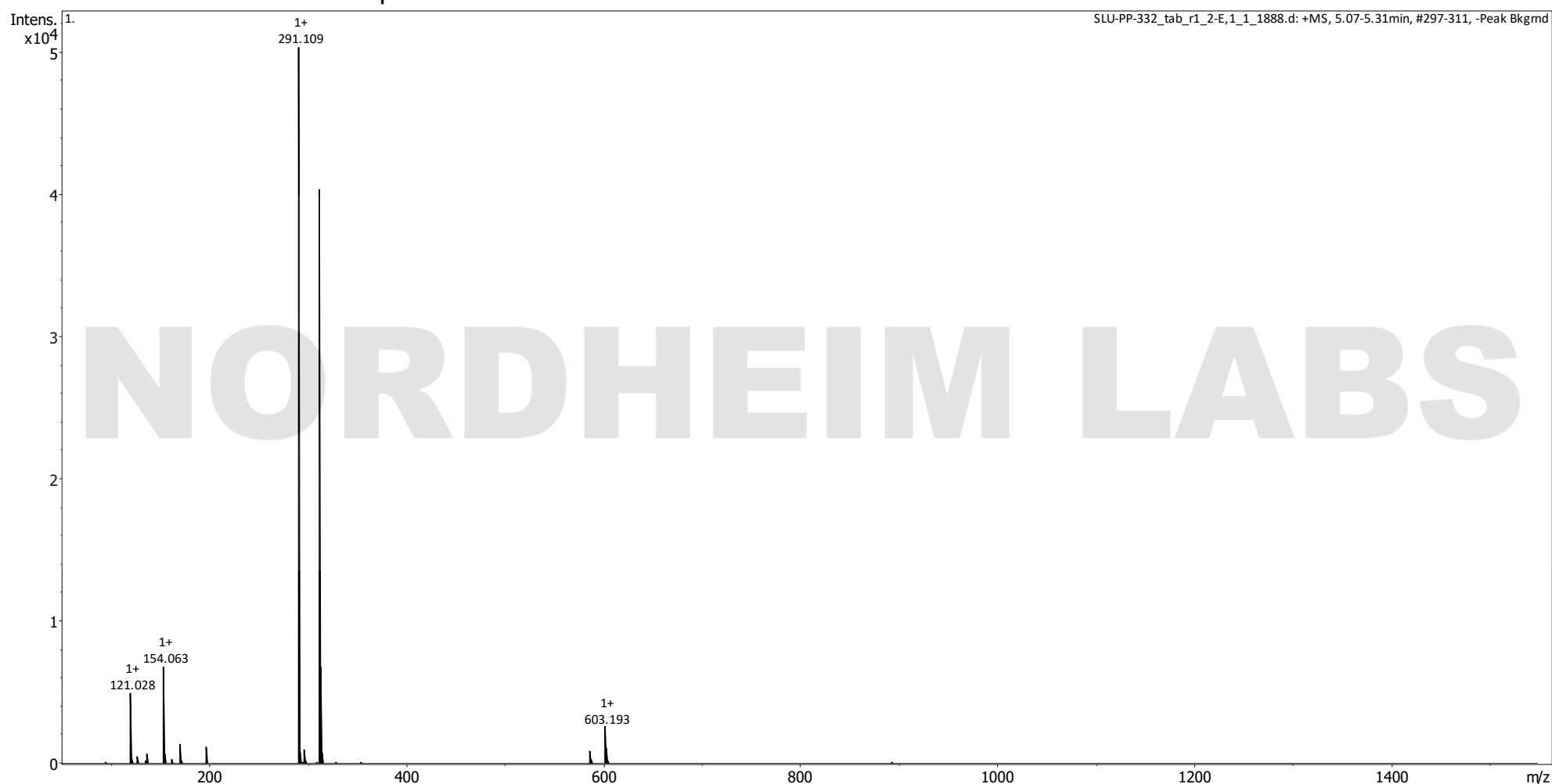
Measured monoisotopic mass : 290.11 Da

**Molecular weight confirmed**

Note : Monoisotopic m/z values are not easily seen in full spectrum view for larger molecules and peptides.

The dominant isotopic peak (base peak) shown in the spectrum below can be used to approximate the average molecular weight frequently reported by vendors and databases as a secondary means of confirmation.

### Recorded MS spectrum



Analysis Performed by  
Ken Pendarvis, ChE  
Analytical Chemist  
MZ Biolabs  
[contact@mzbiolabs.com](mailto:contact@mzbiolabs.com)

2025-01-13